

The Intersection of Disorders of Gut-Brain Interaction With Avoidant/Restrictive Food Intake Disorder

Imani Weeks, BA,* Sophie R. Abber, MS,† Jennifer J. Thomas, PhD,‡§
Samantha Calabrese, CNP,*|| Braden Kuo, MD,*‡||
Kyle Staller, MD, MPH,*‡|| and Helen Burton Murray, PhD‡§||

Abstract: High rates of overlap exist between disorders of gut-brain interaction (DGBI) and eating disorders, for which common interventions conceptually conflict. There is particularly increasing recognition of eating disorders not centered on shape/weight concerns, specifically avoidant/restrictive food intake disorder (ARFID) in gastroenterology treatment settings. The significant comorbidity between DGBI and ARFID highlights its importance, with 13% to 40% of DGBI patients meeting full criteria for or having clinically significant symptoms of ARFID. Notably, exclusion diets may put some patients at risk for developing ARFID and continued food avoidance may perpetuate preexisting ARFID symptoms. In this review, we introduce the provider and researcher to ARFID and describe the possible risk and maintenance pathways between ARFID and DGBI. As DGBI treatment recommendations may put some patients at risk for developing ARFID, we offer recommendations for practical treatment management including evidence-based diet treatments, treatment risk counseling, and routine diet monitoring. When implemented thoughtfully, DGBI and ARFID treatments can be complementary rather than conflicting.

Key Words: feeding and eating disorders, functional gastrointestinal disorder, disorder of gut-brain interaction, eating disorder, avoidant/restrictive eating disorder, cognitive-behavioral therapy

(*J Clin Gastroenterol* 2023;00:000–000)

Eating disorders are common and damaging, with an estimated worldwide prevalence between 27.9 and 59 million,¹ and eating disorder symptoms may lead to, exacerbate, or co-occur with disorders of gut-brain interaction [DGBI; also known as functional gastrointestinal (GI) disorders].² Eating disorder behaviors include dietary restriction (ie, limiting the amount of food eaten, avoiding specific foods, delaying eating); binge eating (ie, the consumption of an objectively large amount of food in a discrete period of time accompanied by a subjective sense of loss of control); and purging (eg, self-induced vomiting) and nonpurging (eg, excessive exercise) behaviors.³ These eating disorder behaviors lie along a spectrum in terms of frequency and manifestations, as well as their underlying motivations. In many eating disorders, cognitive symptoms concerning body shape or weight underlie eating disorder behaviors,³ but there is increasing awareness of nonbody image-based motivations, especially the relevance of avoidant/restrictive food intake disorder (ARFID) in the gastroenterology setting.^{4–7} In this conceptual review, we provide a practical guide for the gastroenterology provider in understanding the DGBI and ARFID intersection, including suggested strategies for how to prevent and assess for ARFID in their patients.

WHAT IS ARFID?

ARFID differs from other EDs in that it does *not* involve concerns about body shape or weight^{3,8} (see Table 1 for comparison of symptoms across various eating disorder diagnoses). ARFID was introduced in the *Diagnostic and Statistical Manual of Mental Disorders-fifth edition (DSM-5)* and is defined as dietary restriction (reduced overall food intake and/or dietary variety) that results in nutritional deficiency, significant weight loss/inability to gain/grow taller, dependence on supplemental nutrition, and/or impairment in psychosocial functioning.³ ARFID can be diagnosed in the presence of any of these 4 consequences of dietary restriction, allowing for significant clinician judgment to be used in diagnosis.⁹

Motivations Behind Restriction in ARFID

Three primary presentations, or motivations, of ARFID, have been described in the literature, fear of aversive consequences, lack of interest/low appetite; and sensory sensitivity (Table 2).^{3,8} Fear of aversive consequences is characterized by fear of a negative outcome around eating (eg, choking, vomiting, abdominal pain, diarrhea).^{3,8} Lack of interest/low appetite is characterized by forgetting to eat, not feeling interested in/enjoying eating, and/or appetite dysregulation (eg, early satiation, low hunger).^{3,8} Sensory sensitivity is characterized by avoidance of specific foods due to

From the *Division of Gastroenterology; ||Center for Neurointestinal Health, Massachusetts General Hospital; ‡Harvard Medical School; §Eating Disorders Clinical and Research Program, Department of Psychiatry, Massachusetts General Hospital, Boston, MA; and †Department of Psychology, Florida State University, Tallahassee, FL.

I.W. and S.R.A. are co-first authors.

K.S. and H.B.M. are co-senior authors.

I.W. and S.R.A. wrote the manuscript and edited the manuscript. H.B.M. provided oversight on the manuscript conceptualization. H.B.M. and K.S. provided substantial feedback on and editing the manuscript. J.J.T., S.C., and B.K. edited the manuscript. All authors approved the final draft submitted.

Supported by the National Institute of Diabetes and Digestive and Kidney Diseases—K23 DK120945 (K.S.) and K23 DK131334 (H.B.M.).

H.B.M. and J.J.T. receive royalties from Oxford University Press for their forthcoming book on rumination syndrome. K.S. has received research support from Ironwood and Urovant and has served as a consultant to Arena, Gelesis, GI Supply, and Shire/Takeda. B.K. has received research support from AstraZeneca, Takeda, Gelesis, Medtronic, Genzyme and has served as a consultant to Shire, Takeda, and Ironwood. J.J.T. receives royalties from Cambridge University Press for the sale of her book, *Cognitive-Behavioral Therapy for Avoidant/Restrictive Food Intake Disorder: Children, Adolescents, and Adults* and *The Picky Eater's Recovery Book*. The remaining authors declare that they have nothing to disclose.

Address correspondence to: Helen Burton Murray, PhD, Massachusetts General Hospital, 55 Fruit Street, Bartlett 9, Boston, MA 02114 (e-mail: hbmurray@mgh.harvard.edu).

Copyright © 2023 Wolters Kluwer Health, Inc. All rights reserved.

DOI: 10.1097/MCG.0000000000001853

TABLE 1. Comparison of Eating Disorder Symptoms Across Diagnoses

Eating Disorder	Dietary restriction	Binge eating	Purging compensatory behaviors*	Nonpurging compensatory behaviors†	Body image concerns	Low body weight
Anorexia nervosa, binge/purge subtype	Black square	Black square	Black square	Gray square	Black square	Black square
Anorexia nervosa, restricting type	Black square	White square	White square	Gray square	Black square	Black square
Avoidant/restrictive food intake disorder	Black square	White square	White square	White square	White square	Gray square
Bulimia nervosa	Gray square	Black square	Black square	Black square	Black square	Black square
Binge-eating disorder	White square	Black square	White square	White square	Gray square	White square
Other specified feeding or eating disorders‡	Gray square	White square	White square	White square	White square	White square

*May include self-induced vomiting, laxative misuse, diuretic misuse, or other medication misuse.
 †May include excessive exercise, fasting, or other extreme weight control behaviors.
 ‡Other specified feeding or eating disorder (OSFED) is a classification of eating disturbance for those who do not meet criteria for any other eating disorder.

Black squares indicate symptom is present. Gray squares indicate symptoms may be present, but are not required for diagnosis. White squares indicate symptom not present.

hypersensitivity to texture, taste, and/or smell.^{3,8} Importantly, these motivations are not mutually exclusive, and patients can present with any combination of the 3.^{4,10,11}

Medical and Psychosocial Consequences

Avoidant/restrictive eating crosses the diagnostic threshold for ARFID when it causes medical (eg, nutritional deficiencies, compromised weight status, dependence on supplemental nutrition) and/or psychosocial problems (eg, inability to maintain relationships or participate in social activities due to restrictive eating). To meet the criteria for ARFID, at least 1 of these consequences must be present (see Box 1 for a summary of each).

Nutritional Deficiency

Even when individuals with ARFID are eating a sufficient amount of food, limited dietary variety due to food avoidance can lead to nutritional deficiency.^{3,12} One study in

children, adolescents, and young adults found that in comparison to healthy controls, individuals with ARFID symptoms reported a significantly lower dietary intake of vitamins K and B₁₂.¹² This study also showed ARFID symptoms were associated with significantly lower protein and vegetable intake, with participants frequently not meeting USDA dietary recommendations for protein (76%) and vegetable intake (86%).¹² However, further research is needed to characterize dietary patterns in ARFID, especially in adults.

Compromised Weight Status

Low body weight is not an essential criterion for nutritional deficiency. Nevertheless, weight loss or failure to gain weight/grow taller can be a complicating factor in individuals with ARFID. For example, one study found that individuals with ARFID required longer hospitalizations than

TABLE 2. Avoidant/Restrictive Food Intake Presentations or Motivations

Fear of aversive consequences	Lack of interest/low appetite	Sensory sensitivity
Restricting types or amounts of foods to avoid feared adverse outcome such as vomiting and/or choking	Restriction/delay in food intake due to reduced appetite	Avoidance of specific foods due to enhanced sensitivity towards texture, taste, and/or smell

Presentations are the 3 prototypic motivations behind food avoidance or dietary restriction in avoidant/restrictive food intake disorder. Presentations are dimensional and overlapping, thus some individuals may have only 1 presentation whereas others may have all 3.

Downloaded from https://journals.lww.com/jcge by BNDMf5epHkAvI/zEoum11QIN4a+kLIEZ2bsIH4dXN10i0nCwCX1A WNYQp/10fHHD33D00RFRyTTySFI4C3V/C1Y0abogqZXd9Gj2MMZLel= on 04/28/2023

Box 1. Examples of Medical and Psychosocial Consequences of Avoidant/Restrictive Food Intake Disorder

- Significant nutritional deficiency
 - Limited food variety in diet
 - Inability to meet daily dietary recommendations
 - Weight loss or failure to gain weight/grow
 - Low weight—BMI < 18.5 kg/m² for > 20 y old and less than fifth BMI percentile for ≤ 20 y old
 - Difficulty gaining weight/height
 - Weight loss—5% of unintentional loss of body weight in 1 mo or 7.5% loss over 3 mo for > 20 y old and 5% loss of body weight for those 20 y old
 - Dependence on enteral/parenteral feeding or nutritional supplements
 - Use of nutritional supplement drinks to meet daily calorie intake
 - Use of vitamin supplements to offset limited diet
 - Enteral/parenteral not required for another medical condition, or prolonged reliance
 - Marked interference with psychosocial functioning
 - Inability to eat around others
 - High distress around limited diet
 - Difficulty eating outside of one's home
 - Family functioning impairment
 - Inability to attend school or hold jobs
- BMI indicates body mass index.

individuals with anorexia nervosa to reach their expected body weight.¹³ One pediatric study found that 18% of participants lost > 20% of body weight before diagnosis and 39% presented with a weight 20% or more below their target weight.¹⁴ To operationalize low weight in ARFID, the *DSM-5* criteria for low weight anorexia nervosa (body mass index < 18.5 kg/m² for those more than 20 y old or less than fifth body mass index percentile for those less than or equal to 20 y old) can be used.^{3,9} To operationalize significant weight loss in ARFID, a threshold of 5% of unintentional loss of body weight in 1 month or 7.5% loss over 3 months is recommended for adults and 5% loss of usual body weight for those less than or equal to 20 years old.^{15,16}

Dependence on Supplemental Nutrition

Dependence on enteral or parenteral nutrition, or nutritional supplements to meet calorie needs can fulfill the medical consequences criterion for ARFID.^{8,17} Dependence on supplemental nutrition for 50% or more of daily intake that is not required by a concurrent medical condition has been recommended as an operational definition.¹⁷ Some patients (eg, ~3%)¹⁸ with DGBI who have gastroparesis may be placed on enteral or parenteral nutrition. While typically intended as a temporary measure, patients requiring prolonged use may meet ARFID criteria, though more research is needed to understand ARFID in these patients. Dependence on vitamin supplements (eg, multivitamins) can also fulfill this criterion even in the absence of current deficiencies, as vitamin supplement use may veil the severity of malnutrition from poor food intake.

Psychological Effects/Quality of Life Impairments

ARFID is also often associated with marked psychosocial/quality of life impairments, such as social eating

difficulties (eg, avoiding eating at restaurants), familial burden, and overall distress about dietary limitations.¹⁹ The type of quality of life impairments can vary, with one pediatric study showing that 100% of outpatients experienced family functioning impairment and 41% experienced social functioning impairment.²⁰ Another interview-based pediatric study showed that 63% of 54 children with food allergies met *DSM-5* criteria for ARFID with dietary restrictions deemed beyond what would be medically necessary (ie, beyond allergen-containing foods) and with greater than expected psychosocial impairment reported by caregivers in the form of, for example, distressing and rigid eating behaviors.²¹ More research characterizing the quality of life impairments in ARFID is needed, especially in adults.

Summary

ARFID is characterized by a reduction in food volume and/or variety with 1 or more of 3 motivations for restriction—fear of aversive consequences, lack of interest in eating/low appetite, and sensitivity to food characteristics (eg, taste, texture, smell). ARFID symptoms certainly lie along a spectrum, and medical and/or psychosocial impairments due to avoidant/restrictive eating are required for an ARFID diagnosis. However, the inclusive nature of ARFID criteria can make it difficult to draw a distinct line between the long-term management of DGBI and non-normative eating behaviors. We suggest that ARFID should be considered when any of the impairment criteria in Box 1 are met, as the presence of these indicators suggest that dietary restriction has crossed the line into causing harm. This line between normative versus problematic food avoidance/restriction is important, as dietary management is common, often adaptive, and nonproblematic (ie, does not result in the level of impairment as the examples in Box 1) for most patients with many conditions including DGBI.²²

THE RELEVANCE OF ARFID IN DGBIs

The eating disorder-GI intersection is not new.^{23–25} A systematic review of GI symptoms and eating disorders found that nausea, gas, and abdominal pain were the most common symptoms among the 195 articles investigated.²⁵ DGBI affects ~40% of adults worldwide²⁶ and ~25% of children and adolescents in the United States.²⁷ Among those with DGBI, disordered eating patterns (such as food restriction, binge eating, purging) ranges from 5% to 44%.²⁸ More recently, the phenomenon of ARFID in DGBI has been recognized with cross-sectional and retrospective studies.^{4,10,11,29–36}

Overlapping Prevalence Between ARFID and DGBI

ARFID Prevalence in DGBI

Clinically significant ARFID symptoms have been reported in 13% to 40% of individuals with DGBIs, in cross-sectional self-report survey and retrospective chart review studies.^{4,10,11,29,31,32} In 2 retrospective chart review studies of DGBI patients in outpatient gastroenterology clinics (N = 410 adults; N = 129 pediatric), around 6% of adults and 8% of children met full criteria for ARFID and 17% of adults and 15% of children had clinically significant ARFID symptoms, but not enough information was available to make a definitive diagnosis.^{4,10} Another retrospective chart review study of 223 adult DGBI patients who were seen by a psychologist, identified ARFID in almost 13%.³³ Cross-

sectional self-report survey studies among adult outpatients with DGBI have shown varying frequencies of ARFID—2 studies using different surveys showed 40% screened positive for ARFID,^{11,29} but another study showed 19.6% screened positive for ARFID.³² The fear of aversive consequences motivation has been the most frequent ARFID motivation across all studies and in fact, one study screening for the ARFID fear motivation alone found a positive screen in 18.5% of community individuals with irritable bowel syndrome (IBS) or inflammatory bowel disease.³⁷ Differences in self-report frequencies may be due to varying cutoffs applied across studies on one ARFID screening questionnaire [the Nine-Item ARFID Screen (NIAS)],^{38,39} as well as characteristics of the clinical populations. Finally, a cross-sectional self-report survey study found that among a community of self-identified “picky eater” adults who self-reported DGBI symptoms, 11% met the diagnostic criteria for ARFID.³¹ To our knowledge, no study to date has investigated the frequency of ARFID in DGBI using semistructured or clinician interview (the gold standard for diagnosis of eating disorders), thus current frequency estimates are limited by the use of self-report surveys.

DGBI Prevalence in ARFID

Conversely, DGBI symptoms are also present in patients with ARFID. An investigation of 168 pediatric and adult patients seeking outpatient eating disorder treatment found that 30% met the criteria for a DGBI and that DGBI frequency did not differ between those with ARFID versus another eating disorder.³⁴ Another study found among inpatient adults with underweight ARFID, 64% had a history of 3 or more GI diagnoses, including some DGBIs (eg, IBS, gastroparesis), and 100% presented with a minimum of 5 GI symptoms.³⁵

Proposed ARFID and DGBI Risk and Maintenance Pathways

Given the bidirectional overlap in frequencies of DGBI and ARFID patients, it is apparent that there is a relatively high comorbidity between DGBI and ARFID symptoms. While dietary management in DGBI populations can be helpful and nonproblematic for many patients, a subset can develop problematic dietary restriction as seen in ARFID. We (H.B.M. and K.S.) and others have suggested that the line is crossed to ARFID when restrictive eating negatively impacts the quality of life or medical functioning.^{40,41} However, our understanding as to how DGBI and ARFID interact, including which may be more likely to come first and how one may exacerbate the other, is limited.

RISK FOR ARFID-RELATED TO DGBI

As described above, a subset of individuals with DGBI may already have or may be at risk for ARFID development. We propose and summarize 3 pathways for ARFID development in the context of DGBIs (Fig. 1).

Preexisting ARFID→DGBI

No studies to date have evaluated DGBI developing in the context of ARFID or ARFID as a risk factor for a future DGBI. However, it is possible that some patients may develop DGBI symptoms due to the neurosensory changes generated by ARFID. The learned history of food avoidance and reaction to such events could make ARFID patients more vulnerable through heightened hypervigilance around GI sensations or heightened visceral

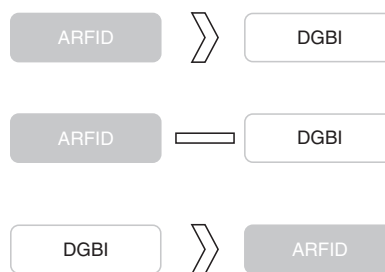


FIGURE 1. Possible development pathways for ARFID and DGBI. ARFID may exist before a DGBI (DGBI symptoms develop as a consequence of ARFID symptoms); ARFID may present concurrently with a DGBI (ARFID and DGBI symptoms can occur simultaneously while not being directly related); DGBI may exist before ARFID (ARFID develops to alleviate DGBI symptoms). ARFID indicates avoidant/restrictive food intake disorder; DGBI, disorders of gut-brain interaction.

hypersensitivity. More research is needed to understand the prevalence of DGBI developing as a consequence of ARFID and the mechanisms involved.

ARFID Concurrent With DGBI

Some patients may develop both ARFID and a DGBI independent of each other. For example, one study found that 1% of ARFID participants had chronic belching, which may be unrelated to ARFID symptoms and have developed independently.⁴ In this case, separate, nonoverlapping factors may maintain the DGBI and ARFID symptoms. However, psychological and physiological factors can be mutually strengthening, therefore the presence of both places a patient at high risk for the symptoms of one disorder to exacerbate the other.⁴²

Preexisting DGBI→ARFID

Given the high frequency of ARFID among patients with DGBI and the routine use of dietary restriction for symptom management, the development of ARFID symptoms in the context of DGBIs is presumably the most important pathway for the GI provider to consider. Theoretical models as well as emerging empirical evidence suggest that ARFID symptoms may arise as a result of GI pain or discomfort.^{4,8,10,29} Though 3% to 23% of individuals with DGBI exhibit >1 ARFID motivation (ie, sensory, lack of interest, fear),^{4,10,11} distinct characteristics of individuals across motivations suggest differing etiological pathways, some of which may be associated with existing DGBI symptoms:

- Fear conditioning (ie, initially neutral scenarios induce heightened fear after aversive events) after triggering event (eg, choking, vomiting episode).
- Increased susceptibility to fear conditioning (eg, due to visceral hypersensitivity) around GI symptoms.
- Significant stressor or comorbid medical or psychological conditions that reduce appetite or interest in food.
- Chronic consumption of a limited variety of foods.

The below descriptions posit how these etiological pathways may theoretically lead to ARFID development in individuals with DGBIs. Importantly, however, more empirical research is needed to support each of these hypotheses.

Fear Conditioning After Triggering Event

ARFID may develop in part from a triggering event (eg, choking, vomiting). Specifically, the triggering event may lead to avoidance of certain foods due to fear of a similar episode from occurring in the future. The individual may experience a sudden and severe onset of avoidant/restrictive eating after the triggering incident, which may cross the line to ARFID when avoidant/restrictive eating persists and leads to medical consequences or functional impairments.⁴³ For example, a patient with chronic nausea who has a vomiting episode may connect specific foods to vomiting and quickly limit their dietary variety to prevent future vomiting episodes. In some cases though, the development of ARFID may be more nuanced and potentially arise in tandem with the DGBI after a triggering event (eg, after a viral infection) due to dysregulation in gut-brain signaling. Further research is needed to understand the nature and course of fear conditioning of ARFID in response to specific triggering events.

Increased Susceptibility to Fear Conditioning

A disproportionate sensory response to normal eating and digestion, as seen with visceral hypersensitivity, may be a risk factor for fear conditioning with food intake, further leading to the development of ARFID. Preoccupation with and anxiety around GI sensations (ie, GI-specific anxiety) has been identified as key maintenance mechanism of DGBI-like IBS.⁴⁴⁻⁴⁶ Over time, the patient connects eating with GI symptoms; in an attempt to control symptoms, restricting types and amounts of foods reinforces the learned association with pain, even if food restriction does not reliably prevent or alleviate symptoms. For example, a patient with IBS may start the low FODMAP diet (ie, a diet low in fermentable oligosaccharides, disaccharides, monosaccharides, and polyols, which are short-chain carbohydrates not well-absorbed by the small intestine), but experiences difficulty with reintroduction due to difficulty tolerating any GI distress with reintroduction and/or generalizes food avoidance beyond the low FODMAP diet.

ARFID may develop when food avoidance is severe enough to result in medical and/or psychosocial consequences. ARFID development through this pathway may occur over a longer time period (compared with the triggering event pathway), where an individual experiences uncomfortable GI sensations repeatedly before developing ARFID symptoms. This pathway is also likely associated with ARFID fear of aversive consequences, which has consistently high rates in individuals with DGBI.^{4,10,11,29}

Significant Life Stressors or Comorbid Non-GI Medical and Psychological Conditions

Significant life stressors or increases in symptoms of existing psychological or non-GI-related medical conditions may result in the onset of ARFID symptoms more slowly and over a longer period of time. This is in contrast to the fear conditioning pathway where ARFID symptoms develop after a *specific* triggering event or in direct response to longstanding DGBI symptoms. Thus, the life stressors/non-GI comorbidities pathway may be most closely tied to the lack of interest/low appetite motivation, rather than the fear of aversive consequences motivation.⁴³ Supporting this distinction, individuals with a lack of interest/low appetite motivation may be more likely to have comorbid medical conditions, attention-deficit/hyperactivity disorder, and mood disorder symptoms than individuals with other

ARFID motivations.^{43,47} For example, an individual may experience loss of appetite over the course of several weeks or months as a result of major depressive disorder, which may result in ARFID when the change in appetite exceeds what would be expected from major depressive disorder alone and results in psychosocial and/or medical consequences.

Chronic Limited Diet Variety

Limited diet variety over prolonged periods of time may put some individuals at risk for ARFID. Limited diet variety is potentially most closely associated with the ARFID sensory sensitivity motivation. This pathway may also be associated with combined sensory selectivity and low appetite/lack of interest motivations,^{43,48} where both selective eating and low appetite result in limited diet variety over time, leading to psychosocial and/or medical consequences. Individuals with sensory sensitivity or combined sensory sensitivity/low appetite motivation find only a small number of foods to be palatable, which may be due to hypersensitive taste perception.⁸ Given that the sensory sensitivity motivation is relatively less common in individuals with DGBIs than the lack of interest/low appetite and fear of aversive consequences motivation,^{4,10,11,29} this pathway may be less relevant for the GI provider.

BIDIRECTIONAL FACTORS THAT PERPETUATE (MAINTAIN) ARFID AND DGBIs

Identifying how ARFID and DGBI may reinforce each other can be crucial to inform what factors can be targeted for symptom improvements. We describe theoretical models in which DGBI symptoms may perpetuate ARFID symptoms and ways in which ARFID symptoms may perpetuate DGBI symptoms, providing supporting evidence where available. Two key factors in this model are:

- **Dietary restriction:** A limited diet (volume and/or variety) likely maintains sensorimotor disturbances in GI functioning, and patients may associate any alleviation of DGBI symptoms with dietary restriction, thus reinforcing or extending restrictive behaviors.
- **GI-specific anxiety:** Restrictive eating may lessen GI-specific anxiety in the short-term, but perpetuate it in the longer term (and possibly associated visceral hypersensitivity).

DGBI Maintenance of ARFID

Several factors may perpetuate ARFID symptoms among individuals with DGBI. First, engaging in dietary restriction may temporarily alleviate DGBI symptoms and thus reinforce dietary restriction as a strategy for symptom reduction and management. Additional factors may maintain ARFID symptoms, such as dysregulation of appetite signals in the brain in the lack of interest/appetite motivation and high fear responsiveness in the fear of aversive consequences motivation.⁸ For example, decreased appetite due to gastric emptying or accommodation disturbances may perpetuate eating small food volumes. However, it is still unknown whether appetite dysregulation is due to motility disturbances or the consequence of deconditioning over time due to restricted food intake. Further complicating the clinical picture, visceral hypersensitivity may be independently associated with both ARFID⁴⁹ and DGBI symptoms,⁵⁰⁻⁵² and it may be unclear whether visceral hypersensitivity is a consequence of one or the other. However, in the context of visceral hypersensitivity in

DGBI, individuals with ARFID may interpret innocuous GI sensations as potentially harmful, further reinforcing fear and avoidance of food.

Finally, while DGBI are known to be associated with food intolerances in the absence of true allergies,⁵³ there is some growing evidence of nonclassical food allergy—at least in IBS.^{54,55} While future research is needed, there may be an interplay between localized food intolerance in DGBI with visceral hypersensitivity and fear conditioning processes, given that treatments promoting dietary exclusion (eg, in the low FODMAP diet) and dietary expansion (eg, in exposure-based CBT) have proven efficacy for IBS.⁵⁶

ARFID Maintenance of DGBI

ARFID symptoms may perpetuate DGBI symptoms, in terms of both sensory and motility processes. Fear of GI symptoms around eating may perpetuate visceral hypersensitivity. Furthermore, while food avoidance/restriction may ease the fear of GI symptoms occurring in the short term, it can perpetuate fear around GI symptoms in the longer term. Specifically, individuals with ARFID may become conditioned to interpret any changes in GI symptoms to be a consequence of food. Then, over time, they may experience heightened GI-specific anxiety which then increases DGBI symptoms. Dietary restriction and weight loss may also perpetuate sensorimotor disturbances in DGBIs. For example, significant dietary restriction is seen in anorexia nervosa and ARFID has been associated with delayed gastric emptying^{4,36} and increased colonic transit time (in anorexia nervosa).^{57–59} Further, significant weight loss from functional dyspepsia (albeit not necessarily at an objectively low body mass index) has been associated with decreased gastric tolerance^{60,61} and accommodation^{62,63} impairments.

Screening for ARFID Symptoms

Understanding risk and maintenance factors for ARFID in individuals with DGBI is essential for ensuring appropriate treatment. Importantly, recommendations for the treatment of DGBI (eg, elimination/exclusion diets, consuming smaller volumes of food at mealtimes)^{64–66} may conflict with recommendations for treatment of ARFID (eg, increased food variety and meal sizes).^{67–69} Thus, screening for ARFID symptoms may be helpful in ensuring that clinicians do not prescribe some of the standard DGBI treatment recommendations that may be counterproductive in those with ARFID.

Suggested Current Screening Options

Although we present several available self-report questionnaires below, engaging the patient around eating behavior themes during a clinical assessment may be sufficient to (1) get a sense of patients that may have a problematic relationship with food and (2) reinforce to the patient that eating behaviors are an important part of GI health. Clinical questioning may be helpful over 4 domains: the impact of food and eating on quality of life, eating-related distress, weight suppression, and dietary restriction (see Table 3 for a checklist of domains to cover and sample questions). Despite some behaviors, such as eating small portion sizes, being common options to alleviate DGBI symptoms, clinicians can assess when the restrictive eating behaviors are causing medical and/or psychosocial impairment that could indicate a need for intervention (Box 1). If the patient has a positive red flag, providers may consider

referral to a behavioral health specialist or dietitian for further assessment (or in the case of medical instability, referral to an inpatient or similar program).

Validated ARFID screening measures do not yet exist for patients with DGBI. However, the NIAS is a short, freely available self-report questionnaire validated for ARFID more generally in children, adolescents, and adults with ARFID.^{38,39} The NIAS subscales also provide information about which ARFID motivation(s) a patient might present with.³⁸ Subscales are measured on a score of zero through fifteen, with picky eating subscale and fear subscale having a threshold score of 10 and the appetite subscale at a threshold score of 9.³⁹ The NIAS may provide a starting point for the assessment of ARFID in patients with DGBI and should be used in conjunction with an assessment to rule out non-ARFID eating disorders. The Fear of Food Questionnaire is also a recently developed questionnaire that provides an assessment of maladaptive fear of foods but does not yet include a cutoff for clinically significant food fears.³⁷ Another possible screening tool is the Pica, ARFID, Rumination Disorder Interview—ARFID Questionnaire (PARDI-AR-Q). The PARDI-AR-Q, adapted from the original PARDI interview, is a self-report questionnaire that assess a likely ARFID diagnosis and the severity of symptoms.⁷³

Targeted Screening

While it would be ideal to screen all individuals with DGBI for ARFID, GI providers may consider only screening individuals who present with specific characteristics that have been associated with ARFID in patients with DGBI and to ask only targeted, high-yield questions. The presence of ARFID symptoms has been associated with increased eating/weight-related complaints,^{4,10} stomach-related GI diagnoses,^{4,29} abdominal pain and constipation-related GI diagnoses,⁴ and a higher total number of GI symptoms.⁴ Though these characteristics are all common in the DGBI patient population, individuals with these features may stand to benefit significantly from ARFID screening.⁴ Using screening questions (sample questions noted in Table 3) as a bare minimum assessment can elucidate whether patients are engaging in normative restriction in response to GI symptoms, or whether their symptoms may cross the threshold into ARFID. Notably, ARFID symptoms in patients with DGBI are present in patients across the weight spectrum,^{4,10,29,34} underscoring the importance of screening for ARFID symptoms even in patients who are not obviously underweight or malnourished. After screening for current ARFID symptoms and for characteristics that may put an individual at high risk for developing ARFID, appropriate treatment recommendations can be made. Medical and psychosocial consequences (ie, those listed in Box 1) are high-yield areas that clinicians can focus on to assess for ARFID as efficiently as possible.

PREVENTING ARFID DEVELOPMENT IN DGBI

In our opinion, a key to preventing ARFID development in the context of a DGBI is to be mindful of how dietary management may put a subset of patients at risk for ARFID. Dietary management of DGBI has become a mainstay of treatment recommendations and are often self-initiated by patients. Dietary approaches involve exclusion diets (eg, where specific foods that are high in short-chain

TABLE 3. Example Questions for ARFID Symptom Screening

Domain	Example questions	Red flags for ARFID
Quality of life	Does eating or making decisions about food get in the way of your ability to live the life you would like to?	Patient reports that eating or making decisions about food is interfering with relationships, work/school, or other activities
Eating-related distress	Have you ever felt like food was an issue for you? How much time, mental energy, and effort do you spend around eating and food choices?	Presence of a past eating disorder, which may confer risk for difficulties with restrictive/elimination diets, even if in remission Patient reports that thinking about food or eating interferes with their ability to concentrate on tasks they are actively engaged in (eg, work, conversations, reading) or that they wish to spend less time thinking about or preparing food
Weight trajectory†	Have you lost weight due to your GI symptoms? If so, what was your usual weight range prior to this weight loss?‡ Have you had difficulty gaining weight due to your GI symptoms?	Unintentional weight loss of >5% over 1 mo, 7.5% over 3 mo, or >10% over 6 mo or lack of weight gain despite intention to gain weight Difficulty gaining weight/growing Low weight [body mass index (BMI) <18.5 kg/m ² for >20 y old; less than fifth BMI percentile for ≤20 y old]
Dietary restriction: Delaying eating and limiting food intake	Over the past month, what has a typical day of eating looked like for you?‡ If patient reports delaying eating or limiting intake: What are the reasons you wait to eat or limit the amount you eat?§ Over the past month, have you had difficulty eating enough, for example because of forgetting to eat or worry about having GI symptoms?	Delaying eating (eg, regularly going >6 waking hours without eating) Limiting food intake (eg, low caloric intake, small portion sizes)
Dietary restriction: Food avoidance	Over the past month, have you avoided eating certain foods?‡ Do you have any strict food rules?	Patient reports eating only a few foods, relying on liquid supplements, eating only home-cooked food, self-directed diet changes without clear symptom benefit, and/or inflexibility around food choices
Ruling out other eating disorder behaviors	What do you do for exercise? How often? Do you keep track of your calorie intake? Would gaining weight upset you?	Patient reports positive to dietary restrictions or diminished quality of life, but negative for shape and weight concerns

*This table may be used as a starting point for screening for ARFID symptoms in individuals with disorders of gut-brain interaction. Red flags should be seen as a potential sign of ARFID, rather than a definite indicator that an ARFID diagnosis is warranted. When concerns about medical symptoms due to restrictive eating are present, see the Academy for Eating Disorders' Medical Care Guidelines.⁷⁰ Questions formed for bare minimum assessment that GI clinicians can address with patients.
 †Significant weight loss can have detrimental physical consequences, even when an individual is not in the underweight BMI range.
 ‡Items adapted from the Eating Disorder Examination.
 §If patient reports shape/weight-related motivations for dietary restriction, consider screening for eating disorders other than ARFID.
 ARFID, avoidant/restrictive food intake disorder avoidant/restrictive food intake disorder; BMI, body mass index; GI, gastrointestinal.

carbohydrates that the small intestine is unable to absorb are removed from the diet temporarily as in the low FODMAP diet^{74–76} or specific foods are removed entirely as in a gluten-free or dairy-free diet), modified intake of specific foods (eg, low-fat, low-particle diet for gastroparesis/dyspepsia),^{22,77} and modified food timing (eg, small frequent meals for gastroparesis/dyspepsia).^{22,77} An investigation of 495 adult and pediatric patients presenting for neurogastroenterology evaluation found that 39% had a history of exclusion diets, and those with exclusion diet histories were over 3 times as likely to have ARFID symptoms.³⁰ Another study reported that of the 13% of gastroenterology patients that already met ARFID criteria, 89% were prescribed a low FODMAP diet.³³ While dietary approaches are highly acceptable to many patients⁶ and often prescribed by providers,⁷⁸ dietary management may exacerbate ARFID symptoms in a subset of patients (Fig. 2). While there is not yet prospective research elucidating who might be most at risk for developing ARFID when prescribed an exclusion diet, routine diet monitoring (as described below) may help to identify ARFID symptoms and intervene early. Some work has suggested that modified dietary exclusion approaches or cognitive-behavioral

treatment (CBT) may be a better fit than the low FODMAP diet for individuals with high levels of GI-specific anxiety, avoidance, and/or weight loss.⁵⁶ We provide several recommendations based on evidence-based diet protocols, other consensus recommendations,⁷⁹ and our own clinical experience.

Education About Evidence-base

It is important for patients to be educated on proper diet implementation for both effectiveness and ARFID prevention. Many patients believe that certain foods⁸⁰ or food sensitivities⁸¹ aggravate symptoms and may frequently self-initiate exclusion diets.³⁰ In addition, there are many diets without quality evidence of effectiveness that patients may know about, have already tried, or were recommended by previous providers. Thus, early conversations about which diets have evidence to support their use for DGBI and identifying food triggers is important in reducing dietary restrictions that may not be effective. The low FODMAP diet has the most evidence for efficacy for adults with IBS, but the evidence behind it is still mixed^{82,83} and with only one small randomized trial in children.⁸⁴ In fact, emerging

Downloaded from https://journals.lww.com/jcge by BHDMSepPhKavIzEoum1tQIN4a+kLHEZgbsIH04XN0i0hCwCCK1A WNYQp/IOHrH33D0ORRyVT7Sf4C3V/C1Y0abogQZXdGj2MMZLel= on 04/28/2023

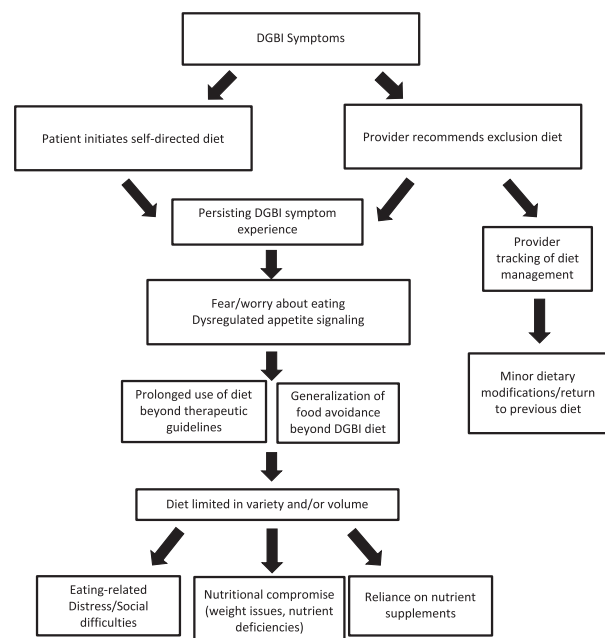


FIGURE 2. Potential risk for avoidant/restrictive food intake disorder through disorders of gut-brain interaction (DGBI) exclusion diets.

evidence suggests traditional dietary advice (eg, creating a regular pattern of eating, reducing processed food consumption) is no worse than the low FODMAP diet in reducing some IBS symptoms^{78,85,86} and is more acceptable to patients (eg, lower cost, easier to shop for/eat out).⁸⁶ There is limited evidence for other dietary approaches (eg, gluten-free;^{82,87} dairy-free diet^{88,89}) in IBS and there is mixed evidence for dietary approaches to managing other DGBI (eg, low-fat, low-particle diet⁹⁰ for gastroparesis/dyspepsia).^{91,92}

Risk Counseling

Early acknowledgment of the potential risk exclusion diets pose on nutritional and psychosocial impairment is also important. For highly restrictive diets like the low FODMAP diet, there is a *temporary* restriction (eg, 4 to 6 wk of high FODMAP food exclusion) with a systematic reintroduction of foods to identify a handful of foods high in FODMAPs that the patient may either avoid or limit quantities of.⁹³ Without guidance to the proper protocol, exclusion diets like the low FODMAP diet can be more harmful than helpful. For example, prolonged use of the elimination phase of the low FODMAP diet has been associated with significant nutrient deficiencies.^{94–96} In addition, exclusion diets have been significantly associated with poorer quality of life,⁷⁶ and greater dietary restrictions have been associated with poorer nutritional status.⁹⁷ Providers should candidly discuss these nutritional and psychosocial risks (including the high association between a history of exclusion diet use and ARFID symptoms) to facilitate prevention. For a full review of the psychosocial and nutritional risks of different dietary approaches for DGBI see the recent Rome Working Team report.⁸¹

Routine Diet Monitoring

If a patient is prescribed any exclusion diet, continual monitoring is needed. Patients can be referred to dietitians to work on diet flexibility to minimize the negative impact on psychosocial functioning.⁵ If the exclusion diet is not improving symptoms, then it should be discontinued.^{5,75} A lack of longitudinal follow-up with providers may put some patients at risk to continue overly restrictive exclusion diets like the exclusion phase of the low FODMAP diet for a prolonged period.⁵ Regular assessment of diet by GI providers may facilitate the prevention of ARFID as well as recognition of when patients have crossed the line into developing ARFID (eg, as in Table 3). In addition, guided dietary therapy is recommended to identify any food triggers that would be warranted to exclude for individuals with DGBI in the absence of a true food allergy, with recommendations against investigation using current food intolerance and sensitivity testing.⁸¹

TREATING COMORBID ARFID AND DGBI SYMPTOMS

Common Treatment Recommendations for ARFID

Currently, evidence-based treatment approaches for ARFID primarily focus on some form of behavioral intervention. Behavioral treatments involve gradual exposure to food types and amounts, and as applicable, correcting nutrient deficiencies, decreasing reliance on supplemental nutrition, increasing weight, and/or decreasing psychosocial impairment. Treatment teams can include a combination of behavioral health providers, dietitians, and primary care providers, depending on the case.⁶⁸ Psychopharmacological approaches can also be used in conjunction with behavioral treatment.⁹⁸ For example, mirtazapine, a drug that may promote gastric emptying according to preliminary data and decreases nausea and vomiting, may be used to facilitate weight gain in patients with ARFID.^{99–101}

CBT for ARFID

Several case series and open trials have shown CBT for ARFID is highly feasible and acceptable, with promising results for efficacy.^{67,69,102–105} Our team has developed an 8-session CBT for ARFID that has developed in the context of DGBI that targets both ARFID and DGBI outcomes, with preliminary, favorable results¹⁰⁶ and a randomized clinical trial in progress. CBT for DGBI+ARFID includes self-monitoring of food intake, regularizing eating patterns, behavioral and food exposure, and maintenance planning (Box 2).⁶⁸ Similar to treatments for each DGBI^{44,108} and ARFID¹⁰⁷ the primary component in CBT for DGBI+ARFID is exposure to fear foods aimed to reduce negative emotions (eg, fear, disgust) and correct predictions around the consequences of eating (eg, learning that the outcome is more tolerable than expected). For adolescents under the age of 16, family-based treatment^{104,107} or parent training^{105,110} can be used, in which parents support the child in increasing dietary volume and variety. While future research is certainly needed on for whom CBT for ARFID is most beneficial, we would recommend clinicians consider CBT (or a similar approach) for patients with DGBI+ARFID, regardless of whether ARFID developed before or subsequent to the DGBI.

Box 2. Components of Cognitive-Behavioral Treatment for ARFID in the Context of DGBI

Education

- Education about gut-brain dysregulation and interaction with avoidant/restrictive eating
- Creation of a personal formulation of behavioral, cognitive, and emotional factors that contribute to both DGBI and ARFID symptom maintenance
- Education about suppressed weight and importance of gaining weight
- Monitoring food intake and timing with food diary

Regular eating

- Eating by the clock, not according to hunger/fullness (eg, every 3-4 h)
- For patients who need to gain weight, increase of food intake by at least 500 calories per day to support 1-2 lb weight gain/wk

Exposure and response prevention

- Gradual exposure to situations and/or food types that are avoided or associated with
- Gradual exposure to increased food amounts to habituate the GI sensations around eating (eg, to increase fullness toleration)
- (For ARFID sensory sensitivity motivation) Progressive introduction of new variations of preferred foods (eg, different brand, different preparation) and unfamiliar foods, approaching them with a nonjudgmental stance

Maintenance planning

- Summarize progress and areas for further improvement
- Create a plan for continued progress

Techniques are modeled from cognitive-behavioral treatment for ARFID¹⁰⁷ and exposure-based brain-gut behavioral therapies for DGBI.^{44,108,109} An 8-session version of the treatment is currently being tested.

ARFID indicates avoidant/restrictive food intake disorder; DGBI, disorders of gut-brain interaction.

Of note, some patients may require a higher level of care to receive sufficient support around meals to make changes in their eating or for medical monitoring at an inpatient level.^{70,72} For example, treating patients with ARFID who are on enteral/parenteral nutrition is not recommended on a regular outpatient level, as it is in most ARFID cases insufficient to support cessation of enteral/parenteral nutrition supports.¹⁰⁷ General guidelines for medical care standards can be found in the Academy for Eating Disorders Medical Care Standards Guide⁷⁰ and primary care best practices.⁷²

Balancing Existing ARFID With DGBI Treatment Recommendations

When an individual presents with both ARFID and a DGBI, treatment recommendations should be adjusted to address symptoms of both disorders.

Modified Exclusion Diets

We recommend that traditional dietary advice over an exclusion diet be considered for patients with DGBI +ARFID. As previously mentioned, there is increasing evidence that traditional dietary advice has similar effects on DGBI symptoms as exclusion diets (eg, for IBS).^{78,85,86} The United Kingdom’s National Institute for Health and Clinical Excellence (NICE)¹¹¹ guidelines for IBS actually suggest traditional dietary advice with eating on a regular schedule (eg, every 3 to 4 h), staying hydrated, and limiting alcohol

and caffeine consumption. In fact, some aspects of traditional dietary advice (eg, establishing regular eating patterns) are a key component of CBTs for ARFID.

If there is a rationale to prescribe an exclusion diet for DGBI symptoms, working in collaboration with a dietitian should be considered for patients to bridge the gap between increasing food volume and variety in ARFID treatment while simultaneously improving GI symptoms using an exclusion diet. Without dietitian guidance, the reintroduction/personalization phase of the low FODMAP diet can have diminished compliance.¹¹² The exclusion period of the low FODMAP diet should only last up to 6 weeks; afterward, it is necessary for food to be reintroduced to mitigate nutritional deficiencies.⁷⁵ Reintroduction is also necessary to prevent the maintenance of ARFID symptoms. In addition, there are other emerging, modified exclusion diet recommendations that may be more suitable for patients with ARFID. For example, a less restrictive low FODMAP diet following the reintroduction phase may be an option.^{96,113}

Neuromodulators

Pharmacological treatments may be used concurrently with CBT for ARFID to reduce maladaptive DGBI symptoms. We take a symptom-based approach to the selection of neuromodulators, being cognizant of any underlying dysmotility while leveraging or avoiding potential side effects. For example, buspirone, gabapentin, tricyclic antidepressants,¹¹⁴ and mirtazapine have all been used in patients with functional dyspepsia,^{114,115} but buspirone and gabapentin are less likely to be constipating and mirtazapine has evidence in dyspeptic patients requiring weight gain.¹¹⁶ While they have yet to be studied, in our clinical experience, neuromodulators may increase the tolerability and acceptability of food exposures in CBT for some patients with DGBI. However, it should be noted that neuromodulators are not currently labeled for use in treating DGBI symptoms.

CONCLUSIONS

In the current review, we aimed to investigate the intersection of ARFID and DGBIs. The high prevalence rate of ARFID symptoms in DGBI patients^{4,10,11,29,31,32} highlights the necessity of being aware of the possible bidirectional risk and maintenance pathways between these conditions, particularly the possible risk for ARFID development in the context of a DGBI. Notably, more research is needed to elucidate whether appetite dysregulation is due to motility disturbances or the consequence of deconditioning over time due to restricted food intake. For the GI provider, it is important to be cognizant of the potential pitfalls of DGBI dietary treatments and to take a cautious approach when using them to prevent both ARFID exacerbation and development.⁷⁵ Continued research on the risk and maintenance factors is also necessary to increase our understanding of how best to prevent ARFID and intervene in interacting DGBI and ARFID processes.

REFERENCES

1. Santomauro DF, Melen S, Mitchison D, et al. The hidden burden of eating disorders: an extension of estimates from the Global Burden of Disease Study 2019. *Lancet Psychiatry*. 2021;8:320–328.

2. Drossman DA, Hasler WL. Rome IV—functional GI disorders: disorders of gut-brain interaction. *Gastroenterology*. 2016;150:1257–1261.
3. American Psychiatric Association, American Psychiatric Association. *Diagnostic and Statistical Manual of Mental Disorders: DSM-5*, 5th ed. American Psychiatric Association; 2013:334–338.
4. Murray HB, Bailey AP, Keshishian AC, et al. Prevalence and characteristics of avoidant/restrictive food intake disorder in adult neurogastroenterology patients. *Clin Gastroenterol Hepatol*. 2020;18:1995.e1–2002.e1.
5. Werlang ME, Sim LA, Lebow JR, et al. Assessing for eating disorders: a primer for gastroenterologists. *Am J Gastroenterol*. 2021;116:68–76.
6. Chey WD. Elimination diets for irritable bowel syndrome: approaching the end of the beginning. *Am J Gastroenterol*. 2019;114:201–203.
7. Harer KN, Eswaran SL. Irritable bowel syndrome. *Gastroenterol Clin North Am*. 2021;50:183–199.
8. Thomas JJ, Lawson EA, Micali N, et al. Avoidant/restrictive food intake disorder: a three-dimensional model of neurobiology with implications for etiology and treatment. *Curr Psychiatry Rep*. 2017;19:54.
9. Harshman SG, Jo J, Kuhnle M, et al. A moving target: how we define avoidant/restrictive food intake disorder can double its prevalence. *J Clin Psychiatry*. 2021;82:20m13831.
10. Burton Murray H, Rao FU, Baker C, et al. Prevalence and characteristics of avoidant/restrictive food intake disorder in pediatric neurogastroenterology patients. *J Pediatr Gastroenterol Nutr*. 2022;74:588–592.
11. Burton Murray H, Riddle M, Rao F, et al. Eating disorder symptoms, including avoidant/restrictive food intake disorder, in patients with disorders of gut-brain interaction. *Neurogastroenterol Motil*. 2021;34:e14258.
12. Harshman SG, Wons O, Rogers MS, et al. A diet high in processed foods, total carbohydrates and added sugars, and low in vegetables and protein is characteristic of youth with avoidant/restrictive food intake disorder. *Nutrients*. 2019;11:2013.
13. Strandjord SE, Sieke EH, Richmond M, et al. Avoidant/restrictive food intake disorder: illness and hospital course in patients hospitalized for nutritional insufficiency. *J Adolesc Health*. 2015;57:673–678.
14. Cooney M, Lieberman M, Guimond T, et al. Clinical and psychological features of children and adolescents diagnosed with avoidant/restrictive food intake disorder in a pediatric tertiary care eating disorder program: a descriptive study. *J Eat Disord*. 2018;6:7.
15. Becker P, Carney LN, Corkins MR, et al. Consensus statement of the Academy of Nutrition and Dietetics/American Society for Parenteral and Enteral Nutrition: indicators recommended for the identification and documentation of pediatric malnutrition (undernutrition). *Nutr Clin Pract*. 2015;30:147–161.
16. White JV, Guenter P, Jensen G, et al. Academy Malnutrition Work Group. Consensus statement: Academy of Nutrition and Dietetics and American Society for Parenteral and Enteral Nutrition: characteristics recommended for the identification and documentation of adult malnutrition (undernutrition). *J Parenter Enter Nutr*. 2012;36:275–283.
17. Eddy KT, Harshman SG, Becker KR, et al. Radcliffe ARFID workgroup: toward operationalization of research diagnostic criteria and directions for the field. *Int J Eat Disord*. 2019;52:361–366.
18. Parkman HP, Blackford AL, Yates KP, et al. Patients with gastroparesis using enteral and/or parenteral nutrition: clinical characteristics and clinical outcomes JPEN. 2023; doi:10.1002/jpen.2493.
19. Becker KR, Keshishian AC, Liebman RE, et al. Impact of expanded diagnostic criteria for avoidant/restrictive food intake disorder on clinical comparisons with anorexia nervosa. *Int J Eat Disord*. 2019;52:230–238.
20. Zickgraf HF, Murray HB, Kratz HE, et al. Characteristics of outpatients diagnosed with the selective/neophobic presentation of avoidant/restrictive food intake disorder. *Int J Eat Disord*. 2019;52:367–377.
21. Patrawala MM, Vickery BP, Proctor KB, et al. Avoidant-restrictive food intake disorder (ARFID): a treatable complication of food allergy. *J Allergy Clin Immunol Pract*. 2022;10:326.e2–328.e2.
22. Pace LA, Crowe SE. Complex relationships between food, diet, and the microbiome. *Gastroenterol Clin North Am*. 2016;45:253–265.
23. Frank GKW, Golden NH, Burton Murray H. Introduction to a special issue on eating disorders and gastrointestinal symptoms—The chicken or the egg? *Int J Eat Disord*. 2021;54:911–912.
24. West M, McMaster CM, Staudacher HM, et al. Gastrointestinal symptoms following treatment for anorexia nervosa: a systematic literature review. *Int J Eat Disord*. 2021;54:936–951.
25. Riedlinger C, Schmidt G, Weiland A, et al. Which symptoms, complaints and complications of the gastrointestinal tract occur in patients with eating disorders? A systematic review and quantitative analysis. *Front Psychiatry*. 2020;11:195.
26. Sperber AD, Bangdiwala SI, Drossman DA, et al. Worldwide prevalence and burden of functional gastrointestinal disorders, results of rome foundation global study. *Gastroenterology*. 2021;160:99.e3–114.e3.
27. Robin SG, Keller C, Zwiener R, et al. Prevalence of pediatric functional gastrointestinal disorders utilizing the Rome IV criteria. *J Pediatr*. 2018;195:134–139.
28. Satherley R, Howard R, Higgs S. Disordered eating practices in gastrointestinal disorders. *Appetite*. 2015;84:240–250.
29. Murray HB, Jehangir A, Silvernale CJ, et al. Avoidant/restrictive food intake disorder symptoms are frequent in patients presenting for symptoms of gastroparesis. *Neurogastroenterol Motil*. 2020;32:e13931.
30. Atkins M, Zar-Kessler C, Madva EN, et al. History of trying exclusion diets and association with avoidant/restrictive food intake disorder in neurogastroenterology patients: A retrospective chart review. *Neurogastroenterology & Motility*. 2023;35:e14513.
31. Nicholas JK, Tilburg MAL, Pilato I, et al. The diagnosis of avoidant restrictive food intake disorder in the presence of gastrointestinal disorders: Opportunities to define shared mechanisms of symptom expression. *Int J Eat Disord*. 2021;54:995–1008.
32. Harer KN, Baker J, Reister N, et al. Avoidant/restrictive food intake disorder in the adult gastroenterology population: an under-recognized diagnosis? *Am J Gastroenterol*. 2018;113:S247–S248.
33. Harer KN, Jagielski CH, Riehl ME, et al. Avoidant/restrictive food intake disorder among adult gastroenterology behavioral health patients: demographic and clinical characteristics. *Gastroenterology*. 2019;156:S-53.
34. Burton Murray H, Kuo B, Eddy KT, et al. Disorders of gut-brain interaction common among outpatients with eating disorders including avoidant/restrictive food intake disorder. *Int J Eat Disord*. 2021;54:952–958.
35. Cooper M, Collison AO, Collica SC, et al. Gastrointestinal symptomatology, diagnosis, and treatment history in patients with underweight avoidant/restrictive food intake disorder and anorexia nervosa: Impact on weight restoration in a meal-based behavioral treatment program. *Int J Eat Disord*. 2021;54:1055–1062.
36. Gibson D, Watters A, Mehler PS. The intersect of gastrointestinal symptoms and malnutrition associated with anorexia nervosa and avoidant/restrictive food intake disorder: functional or pathophysiologic?—a systematic review. *Int J Eat Disord*. 2021;54:1019–1054.
37. Zickgraf HF, Loftus P, Gibbons B, et al. “If I could survive without eating, it would be a huge relief”: development and initial validation of the Fear of Food Questionnaire. *Appetite*. 2022;169:105808.

38. Zickgraf HF, Ellis JM. Initial validation of the Nine Item Avoidant/Restrictive Food Intake disorder screen (NIAS): a measure of three restrictive eating patterns. *Appetite*. 2018; 123:32–42.
39. Burton Murray H, Dreier MJ, Zickgraf HF, et al. Validation of the nine item ARFID screen subscales for distinguishing ARFID presentations and screening for ARFID. *Int J Eat Disord*. 2021;54:1782–1792.
40. Burton Murray H, Staller K. When food moves from friend to foe: why avoidant/restrictive food intake matters in irritable bowel syndrome. *Clin Gastroenterol Hepatol*. 2021;20: 1223–1225.
41. Chey WD, Hashash JG, Manning L, et al. AGA clinical practice update on the role of diet in irritable bowel syndrome: expert review. *Gastroenterology*. 2022;162:1737.e5–1745.e5.
42. Wiklund CA, Rania M, Kuja-Halkola R, et al. Evaluating disorders of gut-brain interaction in eating disorders. *Int J Eat Disord*. 2021;54:925–935.
43. Zickgraf HF, Lane-Loney S, Essayli JH, et al. Further support for diagnostically meaningful ARFID symptom presentations in an adolescent medicine partial hospitalization program. *Int J Eat Disord*. 2019;52:402–409.
44. Ljótsson B, Falk L, Vesterlund AW, et al. Internet-delivered exposure and mindfulness based therapy for irritable bowel syndrome—a randomized controlled trial. *Behav Res Ther*. 2010;48:531–539.
45. Ljótsson B, Andersson E, Lindfors P, et al. Prediction of symptomatic improvement after exposure-based treatment for irritable bowel syndrome. *BMC Gastroenterol*. 2013;13:160.
46. Bonnert M, Olén O, Bjureberg J, et al. The role of avoidance behavior in the treatment of adolescents with irritable bowel syndrome: a mediation analysis. *Behav Res Ther*. 2018;105: 27–35.
47. Kambanis PE, Kuhnle MC, Wons OB, et al. Prevalence and correlates of psychiatric comorbidities in children and adolescents with full and subthreshold avoidant/restrictive food intake disorder. *Int J Eat Disord*. 2020;53: 256–265.
48. Norris ML, Spettigue W, Hammond NG, et al. Building evidence for the use of descriptive subtypes in youth with avoidant restrictive food intake disorder. *Int J Eat Disord*. 2018;51:170–173.
49. Zucker NL, LaVia MC, Craske MG, et al. Feeling and body investigators (FBI): ARFID division—an acceptance-based interoceptive exposure treatment for children with ARFID. *Int J Eat Disord*. 2019;52:466–472.
50. Farzaei MH, Bahramsoltani R, Abdollahi M, et al. The role of visceral hypersensitivity in irritable bowel syndrome: pharmacological targets and novel treatments. *J Neurogastroenterol Motil*. 2016;22:558–574.
51. Losa M, Manz SM, Schindler V, et al. Increased visceral sensitivity, elevated anxiety, and depression levels in patients with functional esophageal disorders and non-erosive reflux disease. *Neurogastroenterol Motil*. 2021;33:e14177.
52. Drossman DA. Functional gastrointestinal disorders: history, pathophysiology, clinical features, and rome IV. *Gastroenterology*. 2016;150:1262.e2–1279.e2.
53. Böhn L, Störsrud S, Törnblom H, et al. Self-reported food-related gastrointestinal symptoms in IBS are common and associated with more severe symptoms and reduced quality of life. *Am J Gastroenterol*. 2013;108:634–641.
54. Fritscher-Ravens A, Pflaum T, Mössinger M, et al. Many patients with irritable bowel syndrome have atypical food allergies not associated with immunoglobulin E. *Gastroenterology*. 2019;157:109.e5–118.e5.
55. Aguilera-Lizarraga J, Florens MV, Viola MF, et al. Local immune response to food antigens drives meal-induced abdominal pain. *Nature*. 2021;590:151–156.
56. Biesiekierski JR, Manning LP, Burton Murray H, et al. Review article: exclude or expose? The paradox of conceptually opposite treatments for irritable bowel syndrome. *Aliment Pharmacol Ther*. 2022;56:592–605.
57. Chun AB, Wald A. Colonic and anorectal function in constipated patients with anorexia nervosa. *Am J Gastroenterol*. 1997;92:1879–1883.
58. Kamal N, Chami T, Andersen A, et al. Delayed gastrointestinal transit times in anorexia nervosa and bulimia nervosa. *Gastroenterology*. 1991;101:1320–1324.
59. Benini L, Todesco T, Frulloni L, et al. Esophageal motility and symptoms in restricting and binge-eating/purging anorexia. *Dig Liver Dis*. 2010;42:767–772.
60. Tack J, Caenepeel P, Fischler B, et al. Symptoms associated with hypersensitivity to gastric distention in functional dyspepsia. *Gastroenterology*. 2001;121:526–535.
61. Tack J, Jones MP, Karamanolis G, et al. Symptom pattern and pathophysiological correlates of weight loss in tertiary-referred functional dyspepsia. *Neurogastroenterol Motil*. 2010; 22:29–35; e4–5.
62. Tack J, Piessevaux H, Coulie B, et al. Role of impaired gastric accommodation to a meal in functional dyspepsia. *Gastroenterology*. 1998;115:1346–1352.
63. Kim DY, Murray JA, Stephens DA. Noninvasive measurement of gastric accommodation in patients with idiopathic nonulcer dyspepsia. *Gastroenterology*. 2001;96:7.
64. Hasler WL. Gastroparesis: symptoms, evaluation, and treatment. *Gastroenterol Clin North Am*. 2007;36:619–647.
65. Gearty R, Skidmore P, O'Brien L, et al. Efficacy of the low FODMAP diet for treating irritable bowel syndrome: the evidence to date. *Clin Exp Gastroenterol*. 2016;9:131.
66. Marsh A, Eslick EM, Eslick GD. Does a diet low in FODMAPs reduce symptoms associated with functional gastrointestinal disorders? A comprehensive systematic review and meta-analysis. *Eur J Nutr*. 2016;55:897–906.
67. Thomas JJ, Becker KR, Kuhnle MC, et al. Cognitive-behavioral therapy for avoidant/restrictive food intake disorder: feasibility, acceptability, and proof-of-concept for children and adolescents. *Int J Eat Disord*. 2020;53: 1636–1646.
68. Thomas JJ, Wons OB, Eddy KT. Cognitive-behavioral treatment of avoidant/restrictive food intake disorder. *Curr Opin Psychiatry*. 2018;31:425–430.
69. Thomas JJ, Becker KR, Breithaupt L, et al. Cognitive-behavioral therapy for adults with avoidant/restrictive food intake disorder. *J Behav Cogn Ther*. 2021;31:47–55.
70. Academy for Eating Disorders. Eating Disorders: A guide to Medical Care. Academy for Eating Disorders Report 2021, 4th Edition. <https://connectedchildhealth.files.wordpress.com/2021/10/eating-disorders-guide-to-medical-care.pdf>
71. Burton Murray H, Staller K, Kuo B. Eating disorders: understanding their symptoms, mechanisms, and relevance to gastrointestinal functional and motility disorders. *Handbook of Gastrointestinal Motility and Functional Disorders*, 2nd ed. SLACK Incorporated. [In Press].
72. Lemly DC, Dreier MJ, Birnbaum S, et al. Caring for adults with eating disorders in primary care. *Prim Care Companion CNS Disord*. 2022;24:39060.
73. Bryant-Waugh R, Micali N, Cooke L, et al. Development of the Pica, ARFID, and Rumination Disorder Interview, a multi-informant, semi-structured interview of feeding disorders across the lifespan: a pilot study for ages 10–22. *Int J Eat Disord*. 2019;52:378–387.
74. Mari A, Hosadurg D, Martin L, et al. Adherence with a low-FODMAP diet in irritable bowel syndrome: are eating disorders the missing link? *Eur J Gastroenterol Hepatol*. 2019;31:178–182.
75. Chey WD, Keefer L, Whelan K, et al. Behavioral and diet therapies in integrated care for patients with irritable bowel syndrome. *Gastroenterology*. 2021;160:47–62.
76. Guadagnoli L, Mutlu EA, Doerfler B, et al. Food-related quality of life in patients with inflammatory bowel disease and irritable bowel syndrome. *Qual Life Res*. 2019;28: 2195–2205.
77. Kim BJ, Kuo B. Gastroparesis and functional dyspepsia: a blurring distinction of pathophysiology and treatment. *J Neurogastroenterol Motil*. 2019;25:27–35.

78. Trott N, Aziz I, Rej A, et al. How patients with IBS use low FODMAP dietary information provided by general practitioners and gastroenterologists: a qualitative study. *Nutrients*. 2019;11:1313.
79. Lacy BE, Pimentel M, Brenner DM, et al. ACG clinical guideline: management of irritable bowel syndrome. *Am J Gastroenterol*. 2021;116:17–44.
80. Lenhart A, Ferch C, Shaw M, et al. Use of dietary management in irritable bowel syndrome: results of a survey of over 1500 United States gastroenterologists. *J Neurogastroenterol Motil*. 2018;24:437–451.
81. Burton Murray H, Doerfler B, Harer KN, et al. Psychological considerations in the dietary management of patients with DGBI. *Am J Gastroenterol*. 2022;117:985–994.
82. Kamal A, Pimentel M. Influence of dietary restriction on irritable bowel syndrome. *Am J Gastroenterol*. 2019;114:212–220.
83. Dionne J, Ford AC, Yuan Y, et al. A systematic review and meta-analysis evaluating the efficacy of a gluten-free diet and a low FODMAPS diet in treating symptoms of irritable bowel syndrome. *Am J Gastroenterol*. 2018;113:1290–1300.
84. Chumpitazi BP, Cope JL, Hollister EB, et al. Randomised clinical trial: gut microbiome biomarkers are associated with clinical response to a low FODMAP diet in children with the irritable bowel syndrome. *Aliment Pharmacol Ther*. 2015;42:418–427.
85. Eswaran SL, Chey WD, Han-Markey T, et al. A randomized controlled trial comparing the low FODMAP diet vs. modified NICE guidelines in US adults with IBS-D. *Am J Gastroenterol*. 2016;111:1824–1832.
86. Rej A, Sanders DS, Shaw CC, et al. Efficacy and acceptability of dietary therapies in non-constipated irritable bowel syndrome: a randomized trial of traditional dietary advice, the low FODMAP diet and the gluten-free diet. *Clin Gastroenterol Hepatol*. 2022;20:2876–2887.
87. Biesiekierski JR, Peters SL, Newnham ED, et al. No effects of gluten in patients with self-reported non-celiac gluten sensitivity after dietary reduction of fermentable, poorly absorbed, short-chain carbohydrate. *Gastroenterology*. 2013;145:320.e3–328.e3.
88. Parker TJ, Woolner JT, Prevost A, et al. Irritable bowel syndrome: is the search for lactose intolerance justified? *Eur J Gastroenterol Hepatol*. 2001;13:219–225.
89. Ockeloen LE, Deckers-Kocken JM. Short- and long-term effects of a lactose-restricted diet and probiotics in children with chronic abdominal pain: a retrospective study. *Complement Ther Clin Pract*. 2012;18:81–84.
90. Olausson EA, Störsrud S, Grundin H, et al. A small particle size diet reduces upper gastrointestinal symptoms in patients with diabetic gastroparesis: a randomized controlled trial. *Am J Gastroenterol*. 2014;109:375–385.
91. Duncanson K, Burns G, Pryor J, et al. Mechanisms of food-induced symptom induction and dietary management in functional dyspepsia. *Nutrients*. 2021;13:1109.
92. Duboc H, Latrache S, Nebunu N, et al. The role of diet in functional dyspepsia management. *Front Psychiatry*. 2020;11:23.
93. Whelan K, Martin LD, Staudacher HM, et al. The low FODMAP diet in the management of irritable bowel syndrome: an evidence-based review of FODMAP restriction, reintroduction and personalisation in clinical practice. *J Hum Nutr Diet*. 2018;31:239–255.
94. Staudacher HM, Kurien M, Whelan K. Nutritional implications of dietary interventions for managing gastrointestinal disorders. *Curr Opin Gastroenterol*. 2018;34:105–111.
95. Staudacher HM, Ralph FSE, Irving PM, et al. Nutrient intake, diet quality, and diet diversity in irritable bowel syndrome and the impact of the low FODMAP diet. *J Acad Nutr Diet*. 2020;120:535–547.
96. Halmos EP, Gibson PR. Controversies and reality of the FODMAP diet for patients with irritable bowel syndrome. *J Gastroenterol Hepatol*. 2019;34:1134–1142.
97. Melchior C, Algera J, Colomier E, et al. Food avoidance and restriction in irritable bowel syndrome: relevance for symptoms, quality of life and nutrient intake. *Clin Gastroenterol Hepatol*. 2022;20:1290.e4–1298.e4.
98. Brewerton TD, D'Agostino M. Adjunctive use of olanzapine in the treatment of avoidant restrictive food intake disorder in children and adolescents in an eating disorders program. *J Child Adolesc Psychopharmacol*. 2017;27:920–922.
99. Yin J, Song J, Lei Y, et al. Prokinetic effects of mirtazapine on gastrointestinal transit. *Am J Physiol Gastrointest Liver Physiol*. 2014;306:G796–G801.
100. Kumar N, Barai S, Gambhir S, et al. Effect of mirtazapine on gastric emptying in patients with cancer-associated anorexia. *Indian J Palliat Care*. 2017;23:335.
101. Marella HK, Saleem N, Olden K. Mirtazapine for refractory gastroparesis. *ACG Case Rep J*. 2019;6:e00256.
102. Brigham KS, Manzo LD, Eddy KT, et al. Evaluation and treatment of avoidant/restrictive food intake disorder (ARFID) in adolescents. *Curr Pediatr Rep*. 2018;6:107–113.
103. Dumont E, Jansen A, Kroes D, et al. A new cognitive behavior therapy for adolescents with avoidant/restrictive food intake disorder in a day treatment setting: a clinical case series. *Int J Eat Disord*. 2019;52:447–458.
104. Lock J, Robinson A, Sadeh-Sharvit S, et al. Applying family-based treatment (FBT) to three clinical presentations of avoidant/restrictive food intake disorder: similarities and differences from FBT for anorexia nervosa. *Int J Eat Disord*. 2019;52:439–446.
105. Shimshoni Y, Silverman WK, Lebowitz ER. SPACE-ARFID: a pilot trial of a novel parent-based treatment for avoidant/restrictive food intake disorder. *Int J Eat Disord*. 2020;53:1623–1635.
106. Weeks I, Becker KR, Ljótsson B, et al. Brief cognitive behavioral treatment is a promising approach for avoidant/restrictive food intake disorder in the context of disorders of gut-brain interaction. 2022;4.
107. Thomas JJ, Eddy KT. Cognitive-behavioral therapy for avoidant/restrictive food intake disorder: children, adolescents, and adults. *Curr Opin Psychiatry*. 2018;31:425–430.
108. Keefer L, Ballou SK, Drossman DA, et al. A Rome Working Team Report on brain-gut behavior therapies for disorders of gut-brain interaction. *Gastroenterology*. 2022;162:300–315.
109. Hunt MG, Moshier S, Milonova M. Brief cognitive-behavioral internet therapy for irritable bowel syndrome. *Behav Res Ther*. 2009;47:797–802.
110. Shimshoni Y, Lebowitz ER. Childhood avoidant/restrictive food intake disorder: review of treatments and a novel parent-based approach. *J Cogn Psychother*. 2020;34:200–224.
111. National Institute for Health and Care Excellence (NICE). *Irritable Bowel Syndrome in Adults: Diagnosis and Management*, 3rd ed. National Institute for Health and Care Excellence (NICE); 2017.
112. Tuck CJ, Reed DE, Muir JG, et al. Implementation of the low FODMAP diet in functional gastrointestinal symptoms: a real-world experience. *Neurogastroenterol Motil*. 2020;32:e13730.
113. Bellini M, Tonarelli S, Nagy A, et al. Low FODMAP diet: evidence, doubts, and hopes. *Nutrients*. 2020;12:148.
114. Drossman DA, Tack J, Ford AC, et al. Neuromodulators for functional gastrointestinal disorders (disorders of gut-brain interaction): a Rome Foundation Working Team Report. *Gastroenterology*. 2018;154:1140.e1–1171.e1.
115. Wauters L, Tito RY, Ceulemans M, et al. Duodenal dysbiosis and relation to the efficacy of proton pump inhibitors in functional dyspepsia. *Int J Mol Sci*. 2021;22:13609.
116. Tack J, Ly HG, Carbone F, et al. Efficacy of mirtazapine in patients with functional dyspepsia and weight loss. *Clin Gastroenterol Hepatol*. 2016;14:385.e4–392.e4.